



16 SE BROADWAY ST • OCALA, FLORIDA 34471

PHONE (352) 732-5255 • FAX (352) 732-0164

Greenway Crossings

- ◆ 3.23 Acres next to the state protected Greenway on Southeast 25th Avenue
- ◆ Direct access onto the Greenway from within the subdivision
- ◆ Equestrian living at its best
- ◆ Electronic privacy gate, underground utilities, street lights
- ◆ Deed restricted
- ◆ Parcel Id Number: 37291-000-11
- ◆ Zoning: A-3 Agricultural
- ◆ Priced at \$30,929 per acre for a total of \$99,900
- ◆ Taxes: \$1,326.16
- ◆ Contact Kirk Boone at 352-732-5255 or 352-843-4199 for more information





16 SE BROADWAY ST • OCALA, FLORIDA 34471

PHONE (352) 732-5255 • FAX (352) 732-0164

Greenway Crossings



3.23 Acres

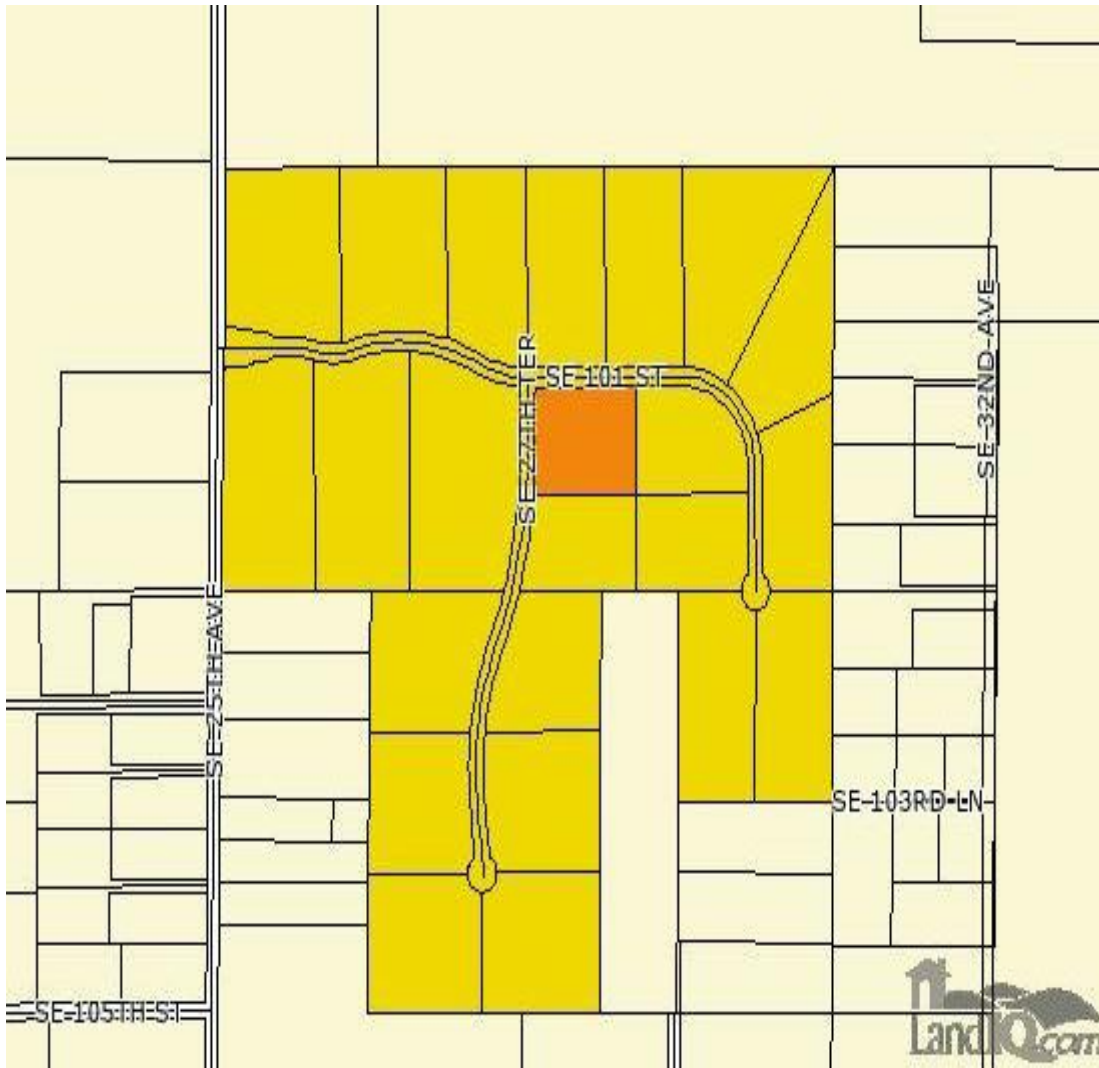




16 SE BROADWAY ST • OCALA, FLORIDA 34471

PHONE (352) 732-5255 • FAX (352) 732-0164

Greenway Crossings

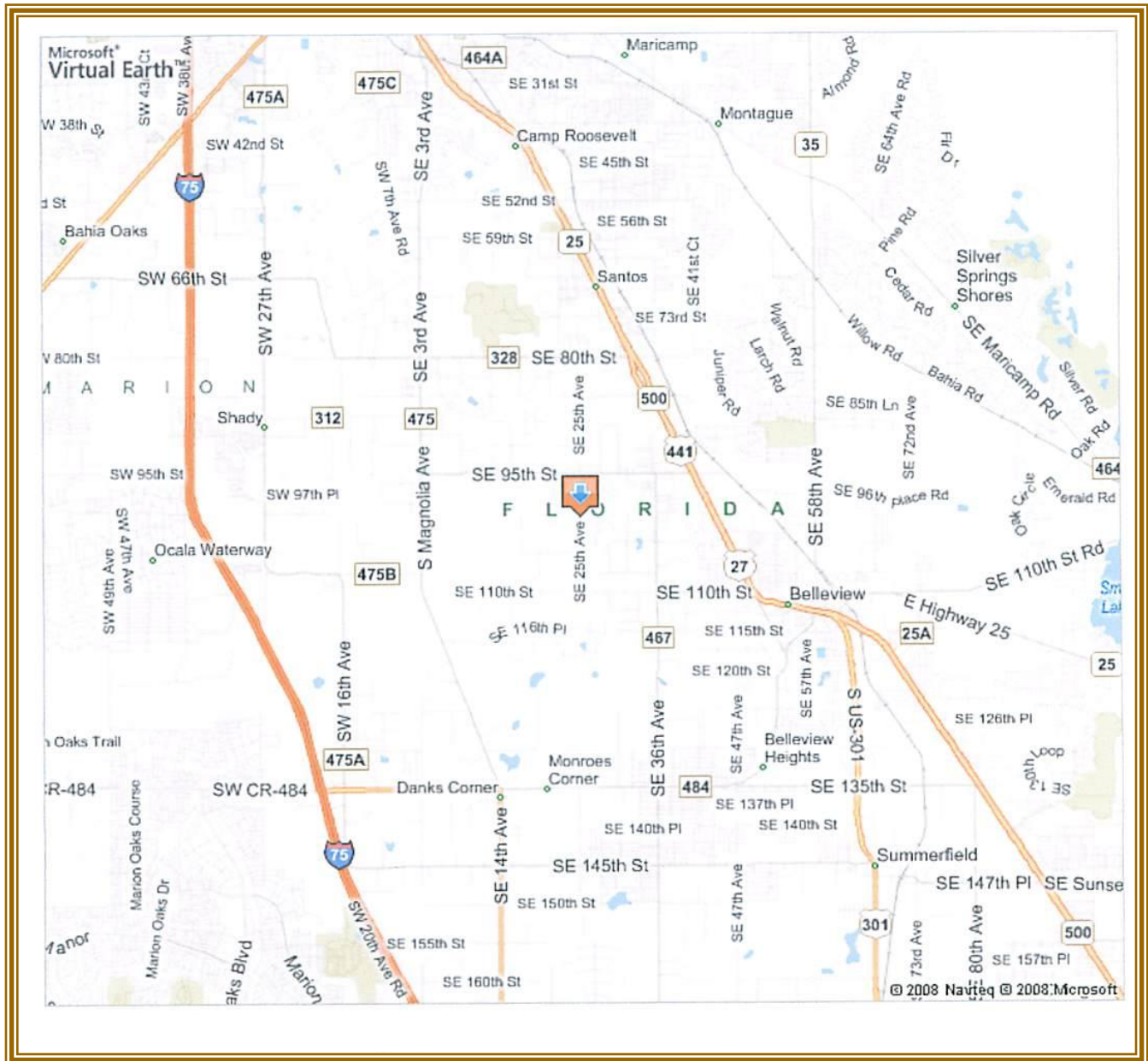




16 SE BROADWAY ST • OCALA, FLORIDA 34471

PHONE (352) 732-5255 • FAX (352) 732-0164

Greenway Crossings



Take US Highway 441 South from Ocala to SE 95th Street (turn right), proceed to SE 25th Avenue (turn right). Go approximately 1 mile to property on left. Call agent for Gate Code