



16 SE BROADWAY ST • OCALA, FLORIDA 34471

PHONE (352) 732-5255 • FAX (352) 732-0164

37± Acres

Ocala, Marion County, Florida

Kirk Boone, Agent
16 SE Broadway Street
Ocala, FL 34471

(352) 732-5255 Office
(352) 843-4199 Cell Phone



37± acres – on Hwy 225 Marion County, Florida

- ✦ Really good deal in NW Marion County!!
- ✦ Located in the heart of horse country, this unique property is being offered at **only \$6,754 per acre!!**
- ✦ Paved road frontage on prestigious Hwy 225
- ✦ Excellent location for your dream farm at an unbelievable price
- ✦ Property overlooks Plumley Farm and other esteemed horse properties
- ✦ There are approximately 8 acres of uplands with the majority of the remaining acreage being comprised of a large grass pond that provides an incredible wildlife sanctuary
- ✦ Marion County Tax Parcel ID #12490-000-00
- ✦ Being offered whole at \$249,900



16 SE BROADWAY ST • OCALA, FLORIDA 34471

PHONE (352) 732-5255 • FAX (352) 732-0164

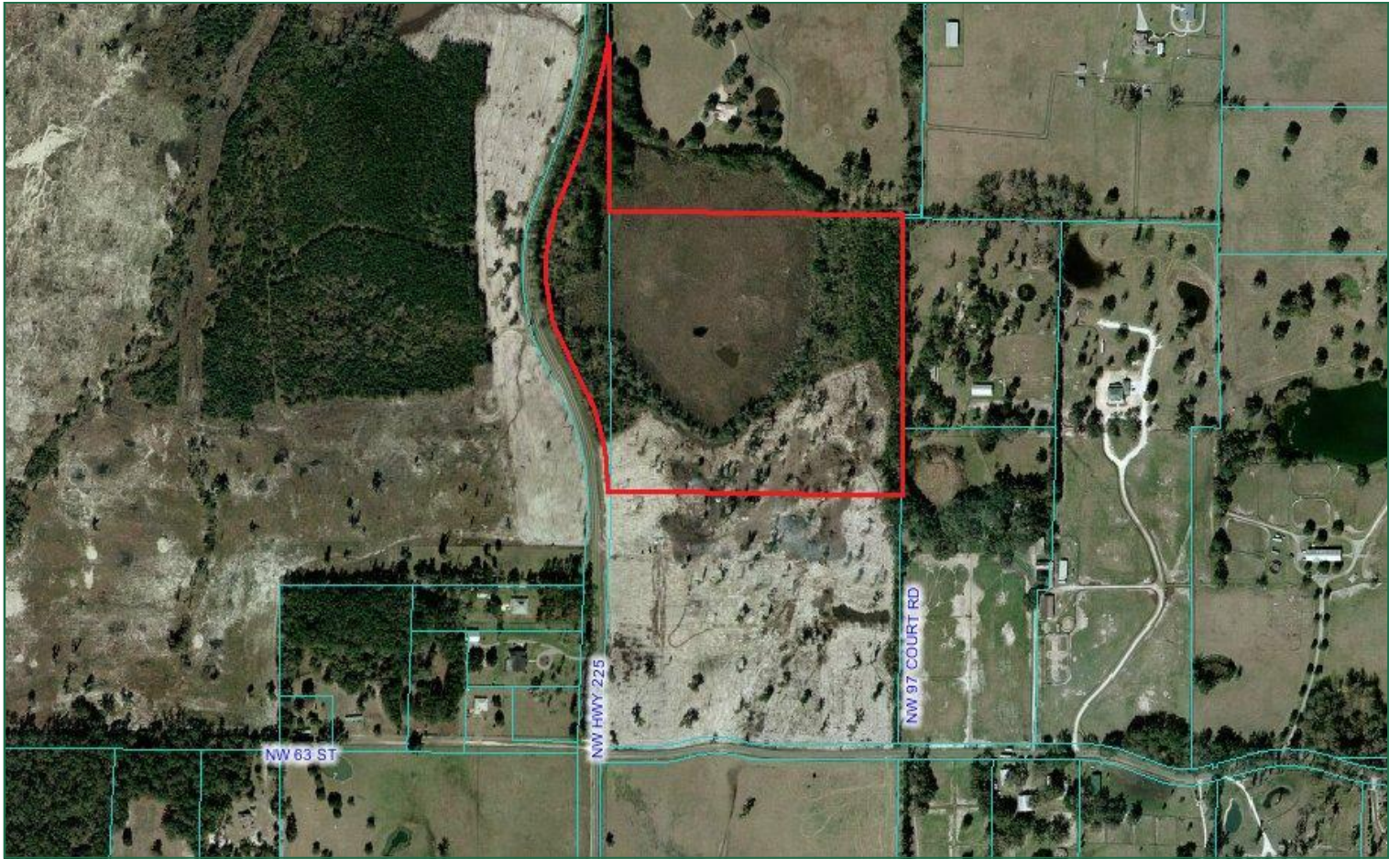


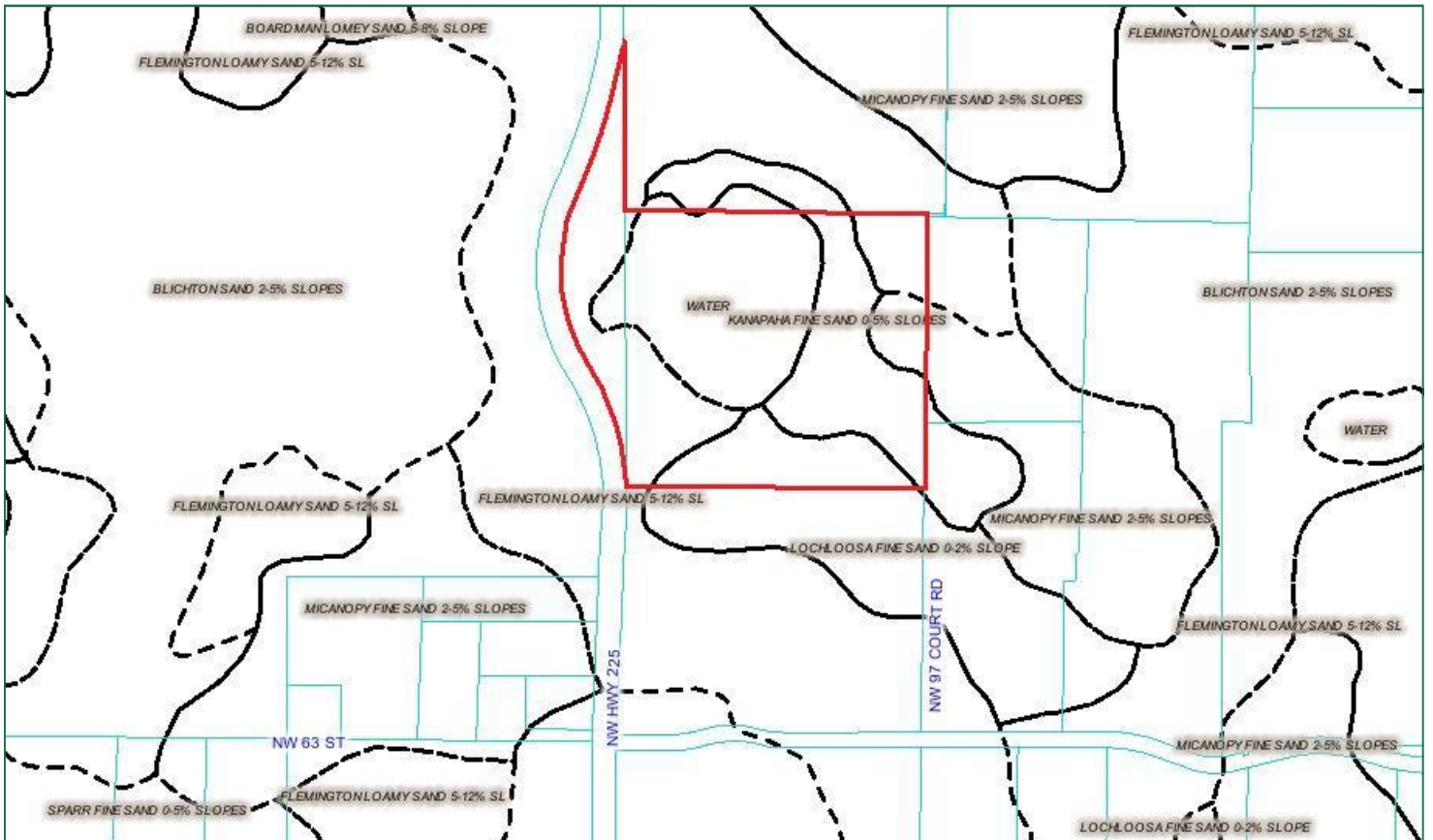
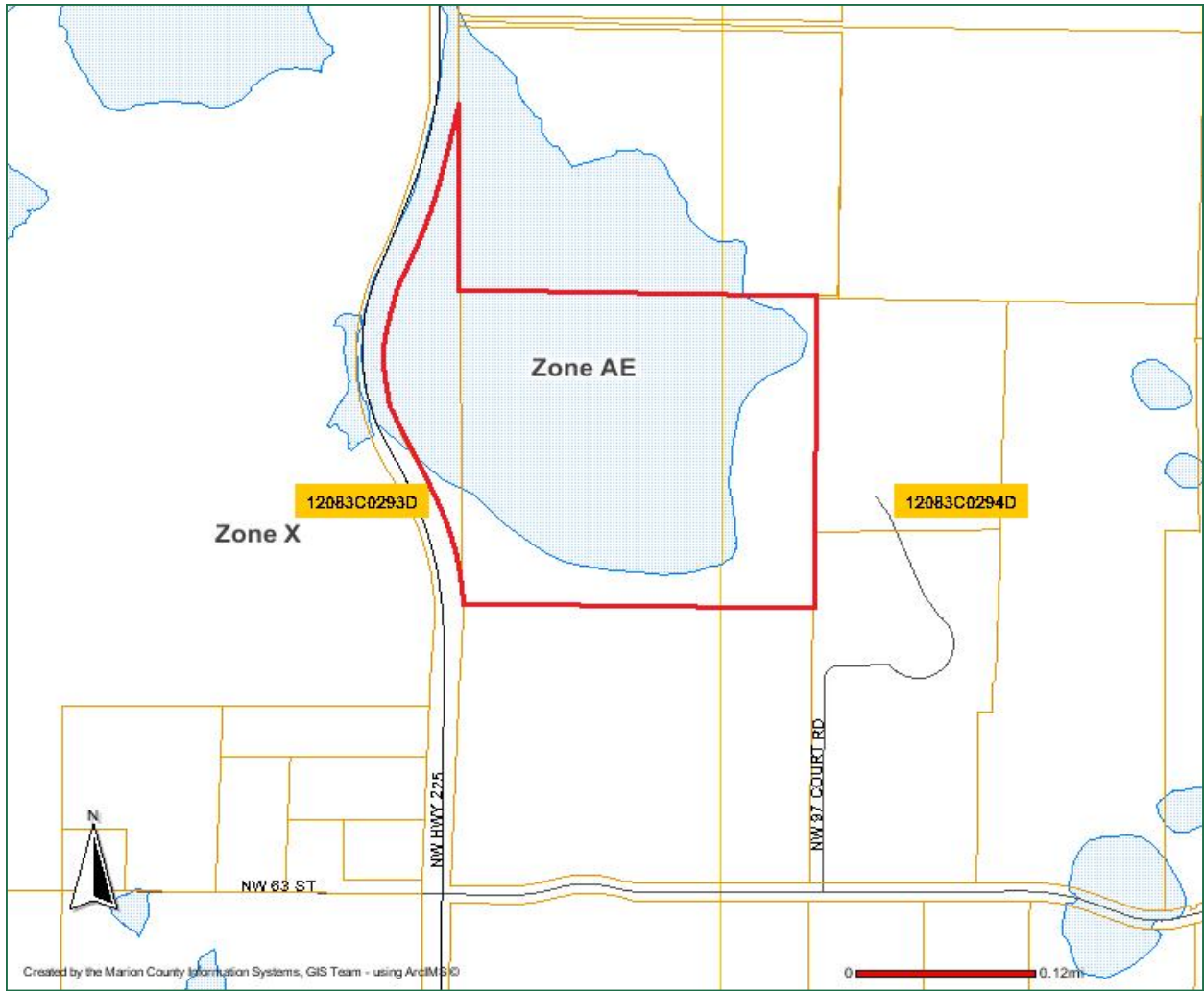
37 Acres on Hwy 225



Ocala Development Corporation
of Marion County, Inc.

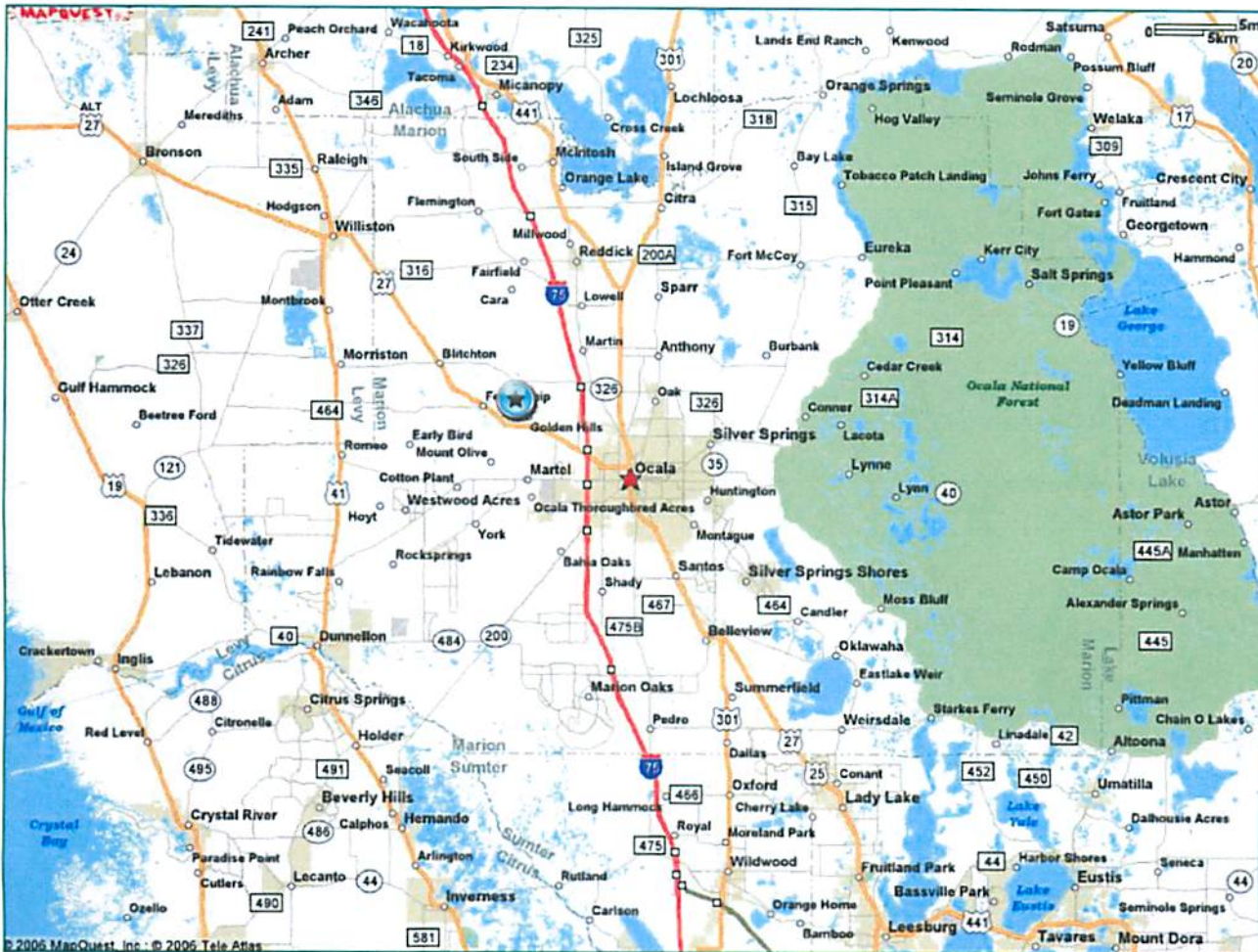






Directions

37 ac on Hwy 225



From Ocala:

Take US 27 NW towards Williston. Make Right (heading North) on Hwy 225. Property located approximately 9/10 of a mile on the Right (East side of the road).